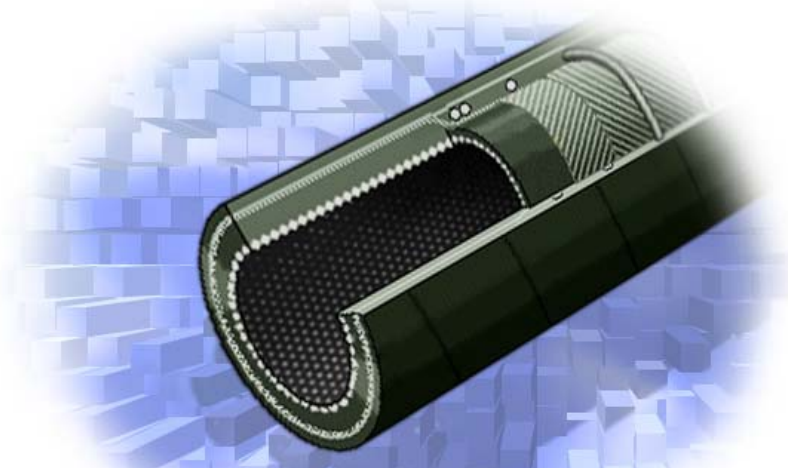


CERAHOSE



CERAHOSE CONSTRUCTION

There are two types of structure of our CERAHOSE. One is “WRAPPED TYPE” (Standard Specification) and the other is “SUCTION & DISCHARGE TYPE”.

The details are as follows.

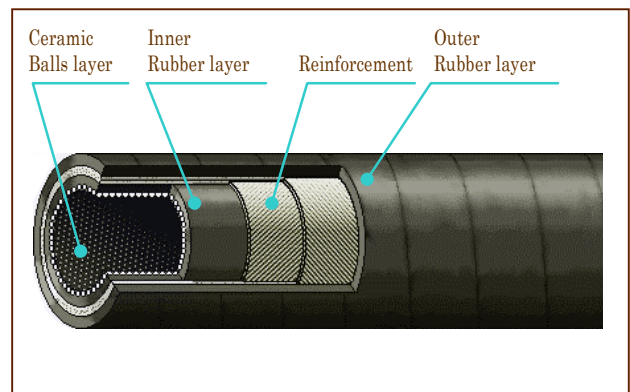
CERAHOSE (WRAPPED TYPE)

This type is consisted of below mentioned 3 layers.

- Inner layer:
Ceramic balls are buried in this layer.
- Middle layer:
Cord plies layer reinforced by textile
- Outer layer:
Rubber layer

Please refer to the illustration on the right.

The elasticity of CERAHOSE is similar to that of general rubber hose, and it has sufficient flexibility.



CERAHOSE (SUCTION & DISCHARGE TYPE)

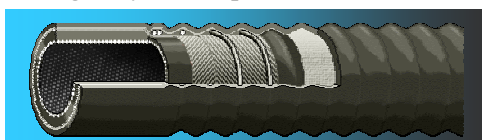
As well as the aforesaid Wrapped Type CERAHOSE, ceramic balls are buried in the inner layer.

The difference is that the middle layer is reinforced by wire.

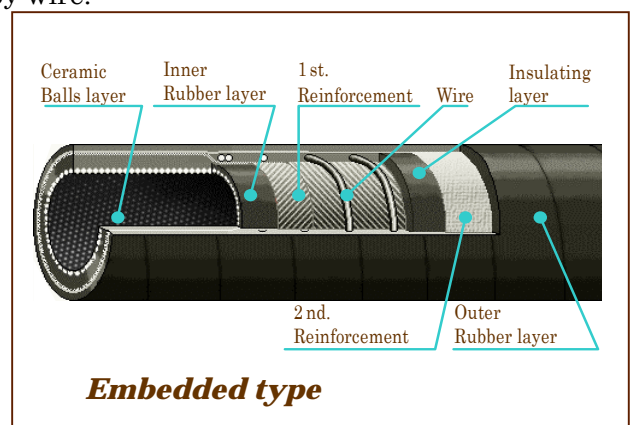
Thanks to this wire reinforcement, this type can be used not only for the discharge of fluids, but also suction of fluid.

The shape of outer layer surface is basically embedded as shown on the right.

However, “Corrugated Type” is also available, depending on your requirement.



Corrugated type

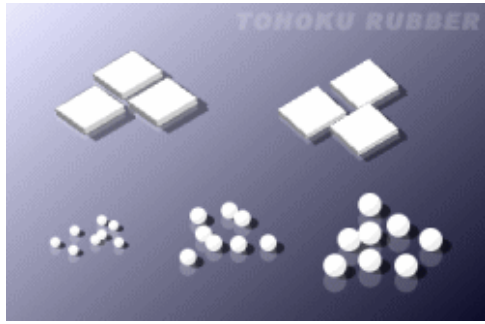


Embedded type

SPECIFICATION

In the standard specification, 3.0mm ceramic balls are buried in the rubber.

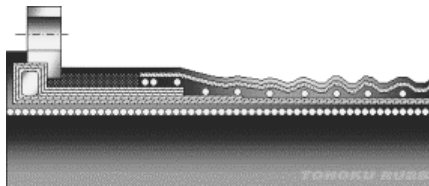
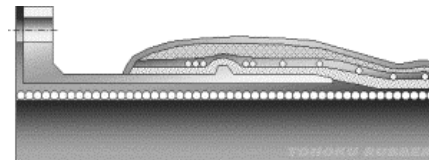
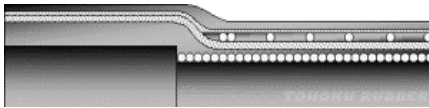
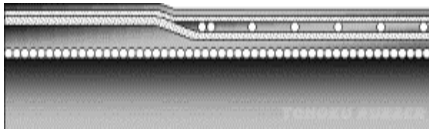
The size of ceramics can be selected, according to the specific purposes and conditions.



Ceramic Type	
Nominal Size	Size (mm)
φ 2. 0 Ceramic Balls	φ 2. 0
φ 3. 0 Ceramic Balls	φ 3. 0 (Standard-size)
φ 5. 0 Ceramic Balls	φ 5. 0
1. 5t Ceramic Tiles	1. 5 × 10 × 10
3. 0t Ceramic Tiles	3. 0 × 10 × 10
4. 5t Ceramic Tiles	4. 5 × 10 × 10

In addition, under-mentioned four types of hose end shape are available.

You can select the most suitable one among these four types.



CUFFED TYPE

We recommend this type, when you insert fittings into the hose terminal (end) and steady it with the band. The specification, without the ceramic balls in the layer, also can be available.

WIDE CUFFED TYPE

It is the same type as cuffed type. It is possible to make it equal inner diameter of hose and that of fittings to insert. It is possible to reduce the damage from wearing of clasps.

BUILT - IN NIPPLE TYPE

The fittings are built-in the terminal hose and unified with rubber layer.

The ceramic balls are embedded in the fittings, therefore it can prevent from wearing of fittings.

NIPPLE - LESS TYPE

This type is similar to built-in nipple type, but this construction has no nipple. This type is suitable to be used when the length of hose is shorter than usual case.

SPECIAL PURPOSE

An anti-static wire can be inserted specially to remove static electricity for each of CERAHOSE.